


## Technical data

	operation when directly connected to chimney
Energy label	
<b>Operating data</b>	
Nominal heat power	13 kW
Efficiency	> 80 %
Consumption of wood	3,9 kg/h
Total heat output of the burning chamber	----
Mass flow of flue gas	10,5 g/s
Required chimney pressure	12 Pa
Required amount of combustion air	35 m <sup>3</sup> /h
<b>Average flue gas temperature</b>	
on the output	294 °C
<b>Heat distribution</b>	
fireplace insert	49 %
door glass (single / double)	51 / 0 %
additional accumulation mass	----
<b>Information for ventilated builds</b>	
Minimal grill area supply / outgoing	1050 / 1250 cm <sup>2</sup>
Minimum distance from insulated areas / floor	50 / 0 mm
Reference insulation <sup>2</sup> ceiling / back wall / side wall / floor	120 / 70 / 0 / 0 mm
Calciumsilicate insulation <sup>3</sup> ceiling / back wall / side wall / floor	80 / 50 / 0 / 0 mm
<b>Information for non-ventilated builds (closed grills)</b>	
Minimum radiant area <sup>4</sup>	suitable
Minimum distance from insulated areas / floor	50 / 20 mm
Reference insulation <sup>2</sup> ceiling / back wall / side wall / floor	190 / 90 / 0 / 20 mm
Calciumsilicate insulation <sup>3</sup> ceiling / back wall / side wall / floor	120 / 70 / 0 / 20 mm
<b>General technical information</b>	
Total weight / lining weight	circa 433 / 122 kg
Burning chamber dimensions (width x depth)	1010 x 305 mm
Combustion air connection	Ø 150 mm
Use in non-ventilated accumulation builds according to craft rules	suitable
Tested according to	EN 13229
Meets values	1. BImSchV (Stufe2), 15a BvG

**1** Listed value from testing. For accurate results is evaluation of each system in the Ortner / KOV program necessary

**2** Mineral wool according to AGI-Q 132

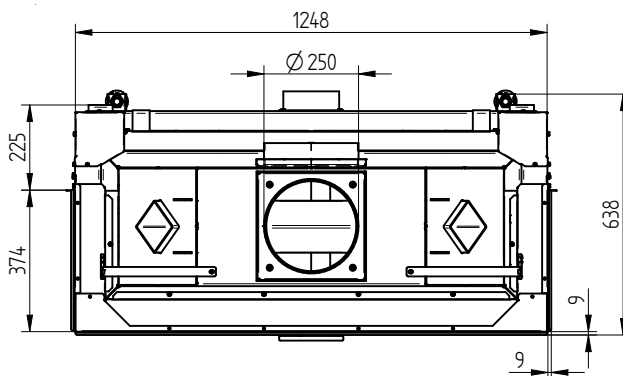
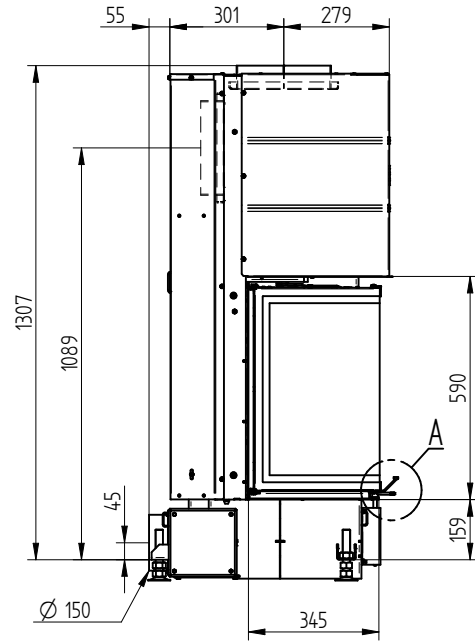
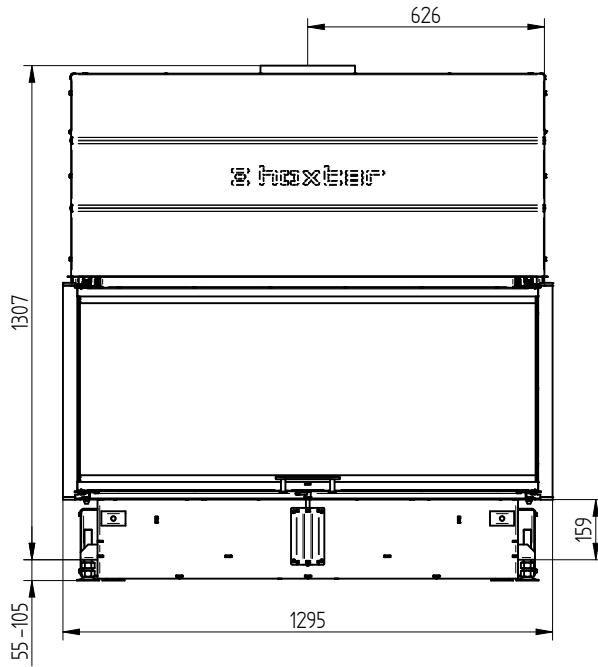
**3** Example SkamoEnclosure Board 225 kg/m<sup>3</sup>

**4** Depends on accumulation period and material characteristics. Listed values calculated with average specific heat output = approx. 500 W/m<sup>2</sup>

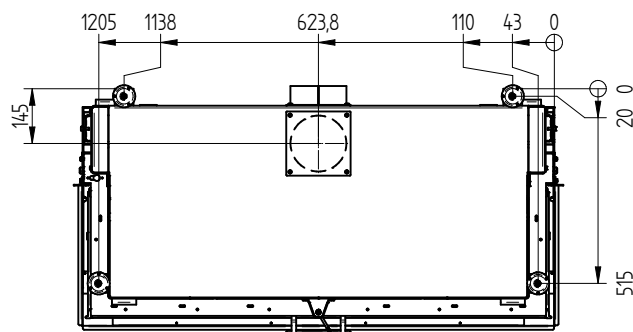
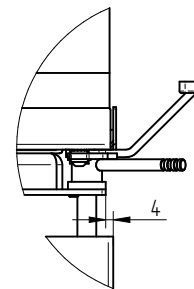
# UKA 37/125/37/57h

Technical data  
Version 09/2023

## UKA 37/125/37/57h / air inlet / feet



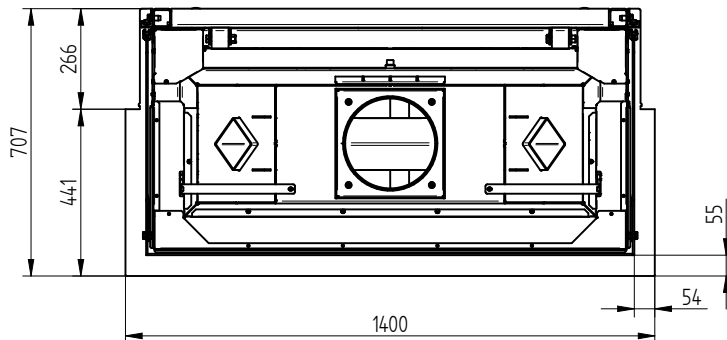
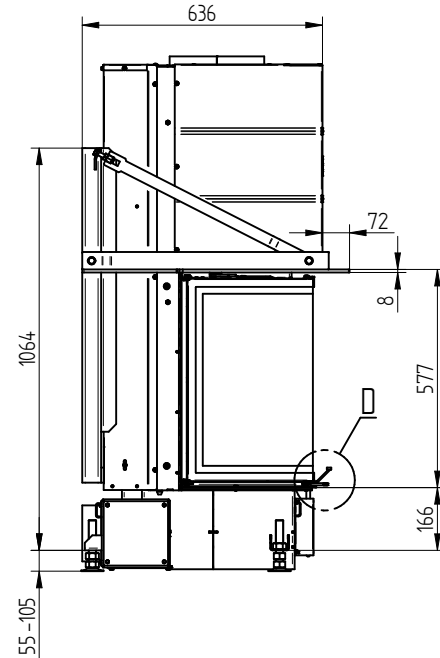
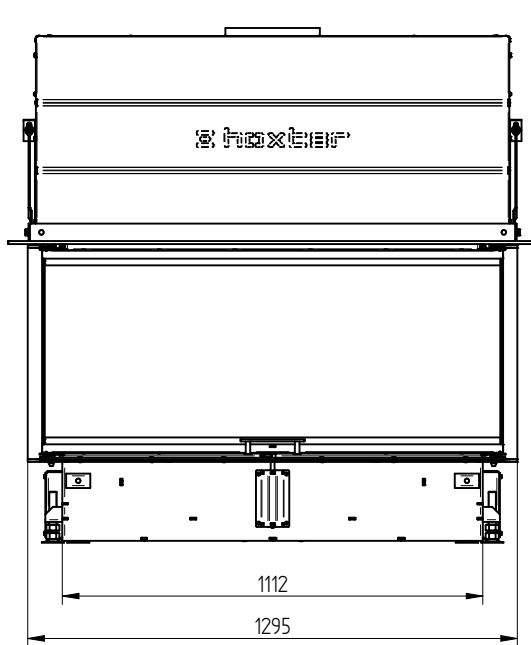
DETAIL A  
1:2



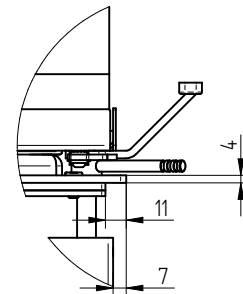
# UKA 37/125/37/57h

Technical data  
Version 09/2023

UKA 37/125/37/57h supporting construction incl. build-on frame 3sides 70 mm



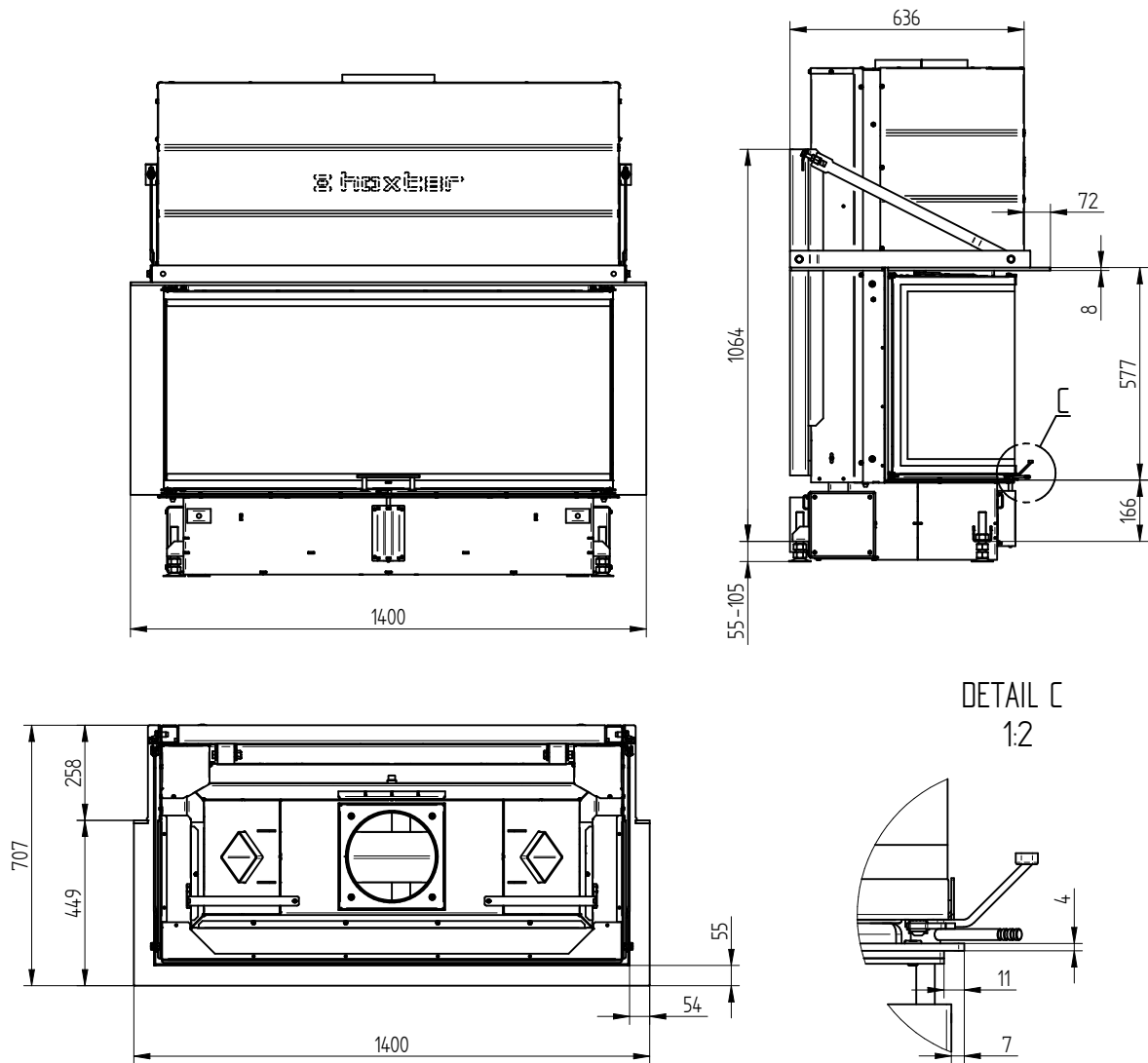
DETAIL D  
1:2



# UKA 37/125/37/57h

Technical data  
Version 09/2023

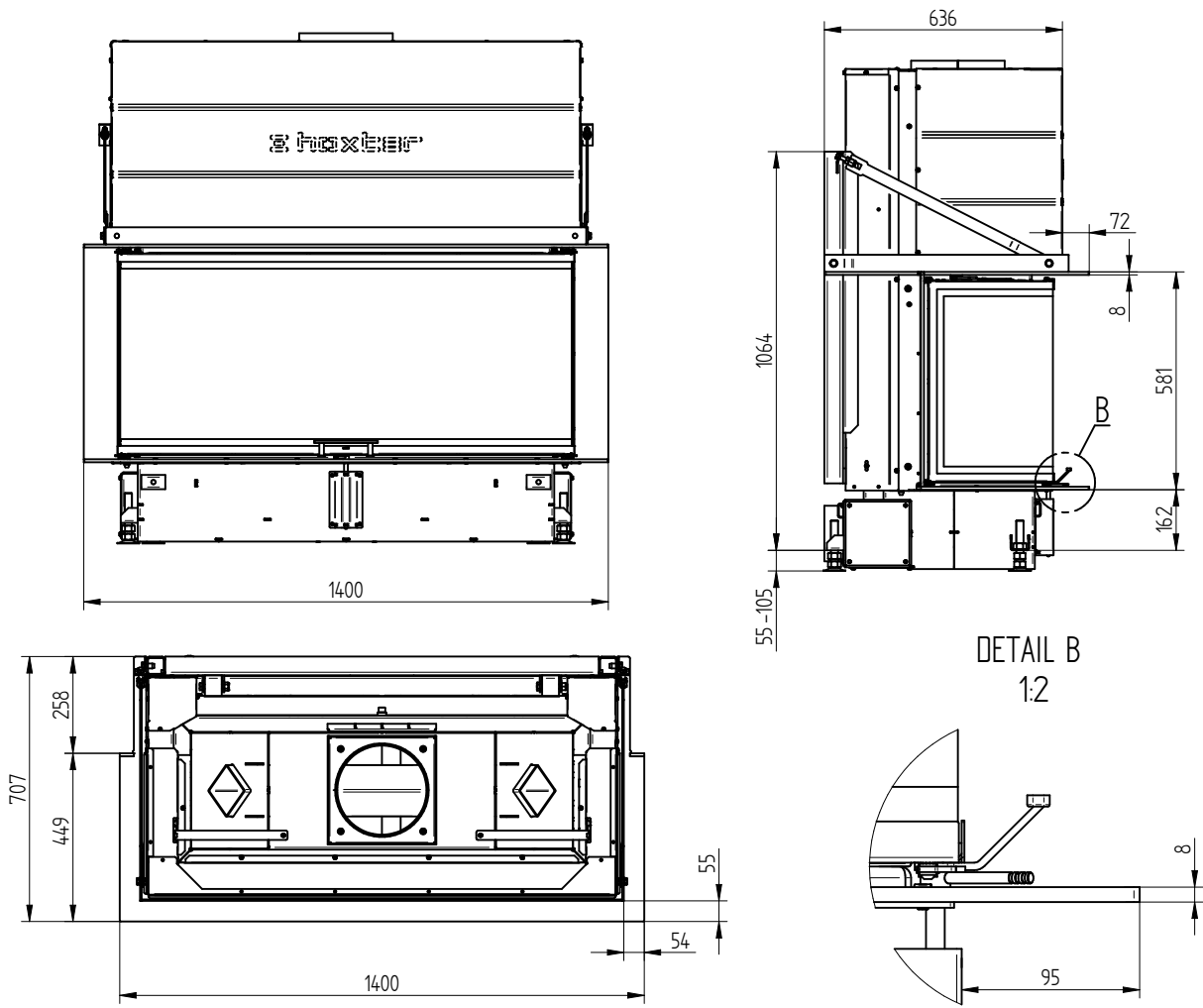
UKA 37/125/37/57h supporting construction incl. build-on frame 5sides 70 mm



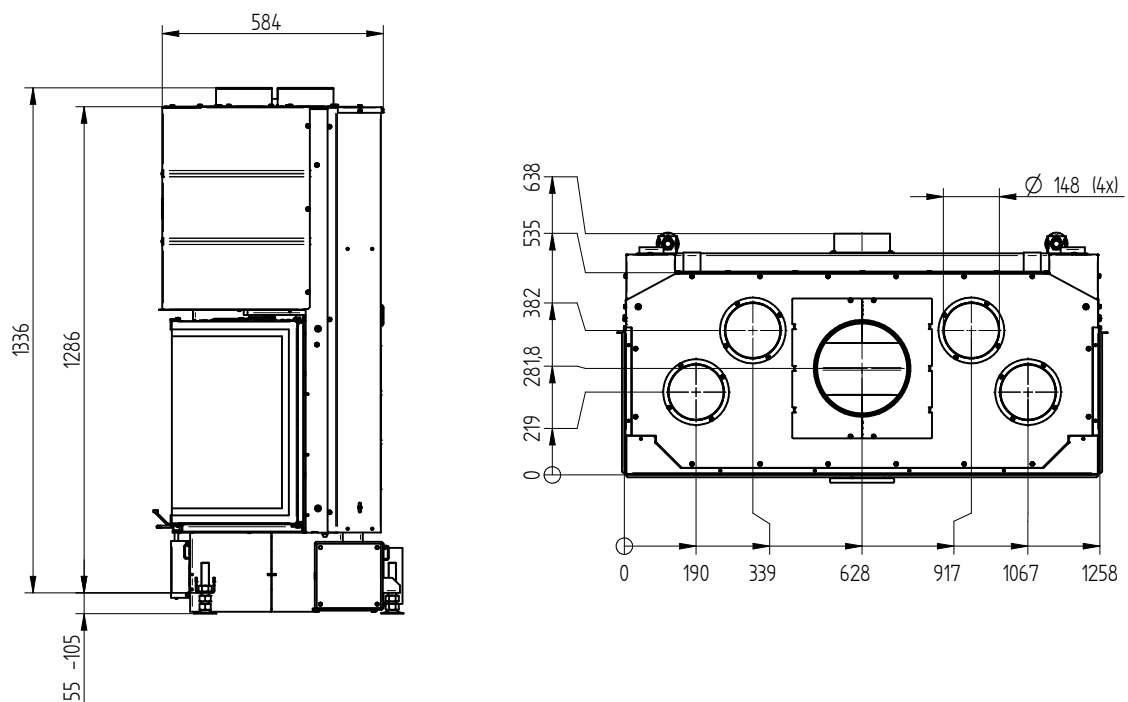
# UKA 37/125/37/57h

Technical data  
Version 09/2023

UKA 37/125/37/57h supporting construction incl. build-on frame 8sides 70 mm



UKA 37/125/37/57h Convection jacket



M 1:20